

Pebble Troubleshooter

PLEASE NOTE

The Pebble watch messages and warnings and icons are not problems with your Pebble watch.

They are meant to warn you of a problem in your configuration / network / system so you can fix it.

So you can get current data, be as confident in that data as we can make it, and take care of your T1D loved one.

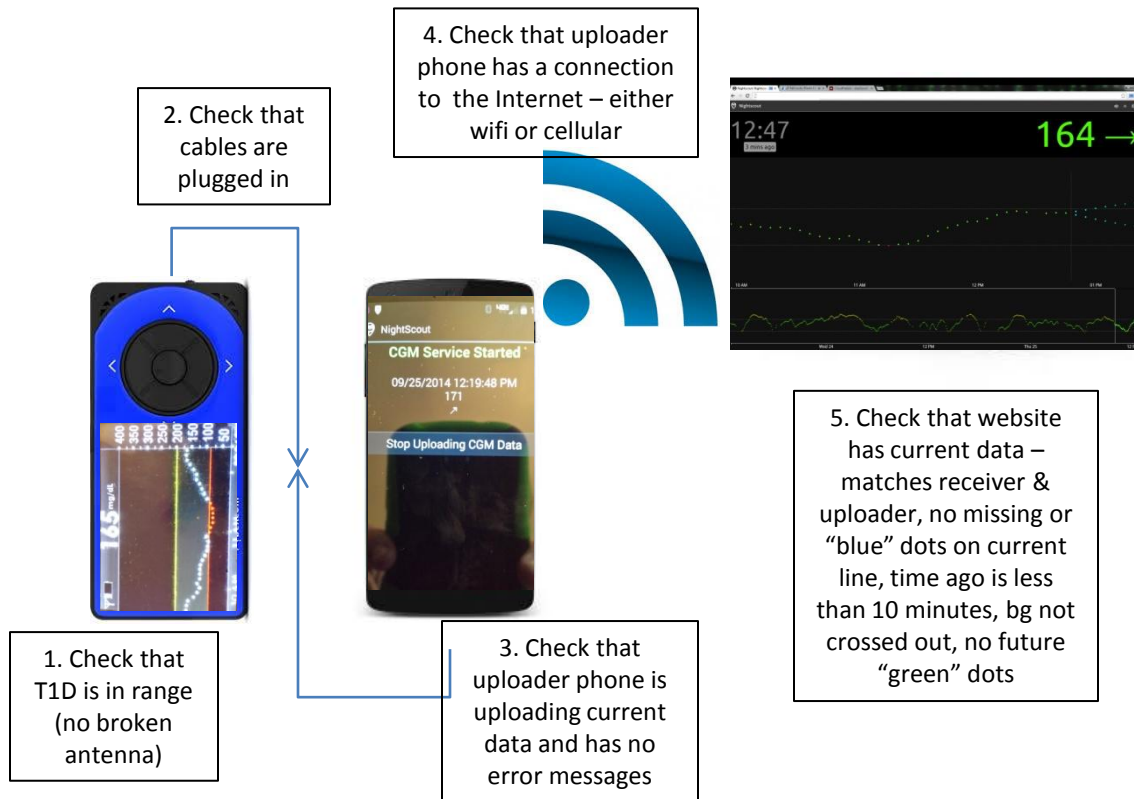
This system is used at your own risk, provided as-is, provided without warranty or support, any part can fail at anytime, and is an additional informational tool in diabetes care. It does not replace any procedures put in place by yourself or your medical team. No part should not be used at anytime to make medical decisions. Thank you and good luck.

Pebble Troubleshooter

Short Term Problems

CHECK CGM

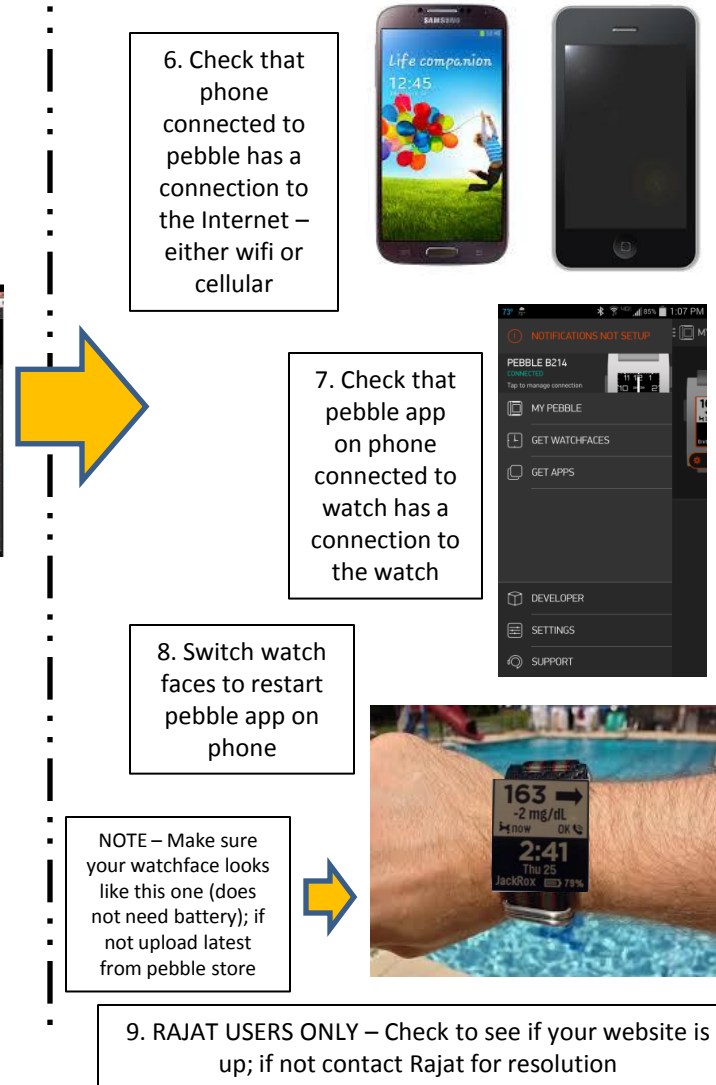
PROBLEM WITH FAR END CHECK STEPS 1-5 AND FIX



10/16/2014

PEBBLE TROUBLESHOOTER V2

CHECK PHONE PROBLEM WITH NEAR END CHECK STEPS 6-9 AND FIX



10/16/2014

PEBBLE TROUBLESHOOTER V2

Pebble Troubleshooter

Vibrations / NO BLUETOOTH / CHECK CGM

**** NOTE MANY TEMPORARY PROBLEMS CAN BE FIXED BY SWITCHING WATCHFACES ****

BROKEN OR NON-STOP VIBRATIONS

- Restart watch

NO BLUETOOTH

- Means No bluetooth connection between pebble watch and phone paired with pebble
- Phone Connected to Watch – check bluetooth is “on” and airplane mode is “off”; open bluetooth menu and make sure the specific pebble watch is paired to that phone; if not, set to those settings or pair if needed
- Pebble Watch – hit middle button, go to settings -> bluetooth, check bluetooth is “on” and paired and says CONNECTED to that specific phone; if not, turn on bluetooth
- Pebble App on Phone connected to watch – open app, go to my pebble, check that it says CONNECTED in green for your pebble watch; if not, press for connect to watch
- Sometimes the pebble watch or your phone is competing for bluetooth. You might want to “Forget” unnecessary connections on your pebble watch or on your phone connected to your watch to see if that helps
- Some phones have an automatic turn on setting for bluetooth, so you might want to set that

CHECK CGM

- BAD CABLE – switch out cable to see if it resolves issue
- FUTURE DOTS – if have future dots, search on website for resolution
- UPLOADER PHONE UPDATES – Perform any updates and clear messages, so that your uploader can run properly and not block uploads

Pebble Troubleshooter

CHECK PHONE

CHECK PHONE – Phone running pebble app connected to pebble watch via bluetooth

DEAD PEBBLE APP ON PHONE CONNECTED TO WATCH – Most common reason is the pebble app is dying on your watch, and the reason is the phone connected to the watch is running out of RAM.

- DROID (phone connected to watch) – Uninstall unnecessary applications and disable applications you don't need; also running the Battery Doctor application (or similar app) may help, but be sure to whitelist the Pebble application and any other critical applications (like for work). If nothing else, battery apps will show you battery drainers.
- IPHONE (phone connected to watch) – Turn on background refresh for the pebble application; uninstall unnecessary applications and disable applications you don't need.
- BROWSER (phone connected to watch) – close out of window / browser instead of just minimizing or exiting; try running Opera or Dolphin instead of Chrome or Safari; disable or uninstall Chrome if you don't need it.

OTHER CHECK PHONE ISSUES

- PEBBLE WATCH –Uninstall other recent watchfaces or apps that could be causing additional issues, and make sure to restart your watch after uninstall.
- UPDATES – Perform any updates to phone connected to watch, watch, pebble app on phone connected to watch, and cgm watchface that are asked for or required. Not doing them will cause unpredictable behavior.
- CORRUPTED WATCH MEMORY – Factory reset your watch; pair your watch back to your phone with the pebble app; reload cgm watchface onto watch.
- WIFI INTERFERENCE/BAD CONNECTION – If you are running on Wifi, either switch to cellular or another wifi connection to see if problem resolves. Note – it may not be your connection, but something interfering with your connection, even if you are sitting right next to your hotspot.
- BAD CELLULAR CONNECTION – If running on cellular, check to make sure you have a good signal. Also switch to wifi to see if it resolves the problem.

Pebble Troubleshooter

Stuck on LOADING / Unreadable Watchface

Stuck on LOADING – Initial Watch Installation

- Almost always an incorrect endpoint
- Make sure your endpoint starts with `http://` and ends with `pebble`, like this – <http://name.azurewebsites.net/pebble>
- If you are MMOL, make sure it ends with `?units=mmol` like this – <http://name.azurewebsites.net/pebble?units=mmol>
- Make sure you type in the endpoint exactly, with no spaces or returns or enters in the middle or at the end

Stuck on LOADING – After Watch Installation

- Make sure endpoint is correct (see above).
- Make sure your bluetooth connection is working – perform steps under NO BLUETOOTH.
- Make sure you have a phone connection and your pebble app is running – perform steps under CHECK PHONE on page 1 (steps 6-9).
- Make sure you have the latest Pebble software. Go to pebble app on phone connected to watch. My Pebble, Support, Check for Updates, Check Now.

Unreadable Watchface

- Meaning your watchface is no longer readable because it's "tiled" or "scrambled" or it looks like an old scrambled TV station ("gray noise" or "noisy")
- Known bad hardware issue – if you have a return or warranty program through a local store then return through store or contact Pebble directly to return

Pebble Troubleshooter

APP CRASH / UNPREDICTABLE BEHAVIOR

REPEATED APP CRASH or UNPREDICTABLE BEHAVIOR

Please “scrub” – perform these steps – in this order

- go to pebble app
- unload everything from your watch.
- go to your locker
- trash everything from locker - tap on it, tap on trash can
- uninstall pebble app
- restart your phone
- restart your watch (see NOTE 1)
- when phone comes back, install pebble app
- turn developer mode on
- Find latest CGM watchface – if from labs, turn developer mode on; make sure it says NEW
- Load latest CGM watchface, which loads on watch
- put in endpoint

NOTE 1 – For continued problems, you may want to try this again, but factory reset your watch instead of just restarting your watch. On watch, press middle button, go to settings, factory reset, yes. When it comes back, you will have to re-pair the bluetooth of your watch with the phone that has the pebble app, then proceed to next step.